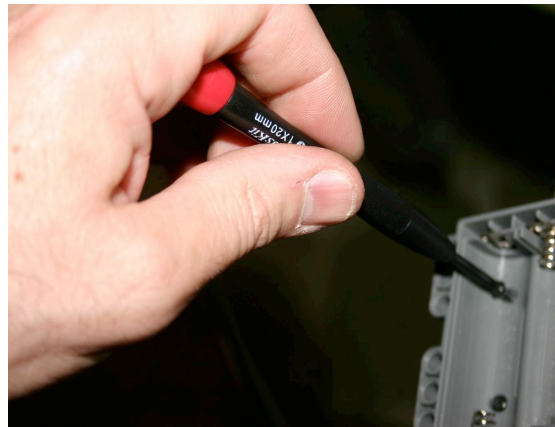


Dear Patrick Logan,
Hi,

I found that the internet helped me a lot more than expected. So I decided to share a lot of information to help other people solving their issues.

Please post the following 13 images to my post.

01 – Please don't destroy the plastic threading when you need to re-assemble any plastic cover using screw driver. I developed a very easy but tricky idea to protect the entire plastic treading, especially if it were made from cheap plastic. LEGO was made from ABS which is more rigid than other kind of plastic, but careless assembly could damage the threading. My idea is to hold the screw driver as mentioned in the image, and to make a little pressure downward, and at the same time make counterclockwise turn until you hear a knock which means, the screw cached its old plastic threading, then turn the screw clockwise to reassemble the kit. The second thing it to note not to assemble two screws in the same side, just screw it like a cross.



1 3
4 2

or hold your hand on the left side of NXT brick while you need to screw the right side.

The other idea, it not to tighten the screws from the first time.

02 – it's better not to use any metallic tools to disassemble plastic covers. i.e Here, simply use your fingers to disassemble but hold the cover as if you were using lever.



03- Also, Plastic cards can help. But if you are newbie don't use unexpired Credit Cards to do it!. And be careful about the magnetic film, or the smart card contacts.

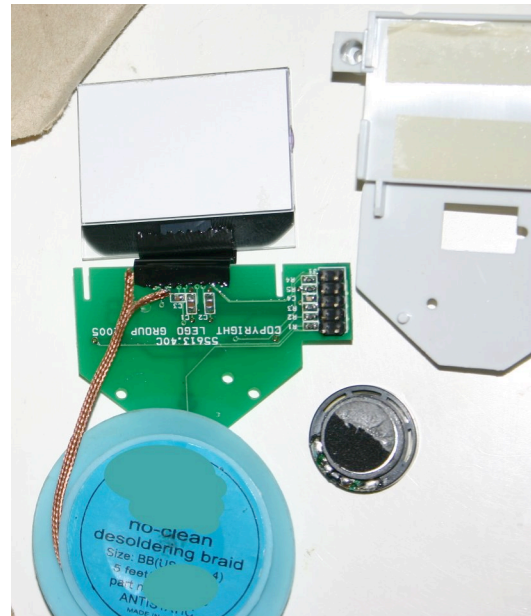
04- It's more professional to use special plastic tool to do that. You can find it in any electronic store such as mobile repair Stores. They are using it to dismantle tiny mobile plastic covers.



05- Use a hair blower to heat up the self dual side adhesive rear the LCD screen. And slowly... easy... carefully remove the LCD from the white plastic base form the lower corners. And Be Carefull not to touch the black flat to do that. As several companies mention that you shouldn't unplug electric cords from the wire! So please if you are not familiar with such thing, try it first in a damaged cheap Calculator.

Also, you should note that LCDs contain liquid crystal which is very harmful to your body. So it's wise not to play in broken LCDs.

The same picture shows, that you should de-solder the speaker, to better control the LCD board.

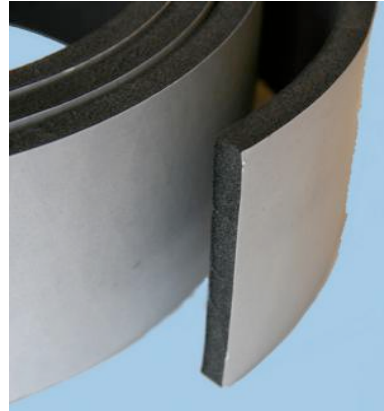


LCD glasses require an AC voltage to **polarize** the liquid media in the glass. And it uses a special scanning procedure to display dots. and as it uses high frequencies to do that, so any cold welding on the available capacitors on this PCB could affect the display.

To re-solder cold welded point, first of all heat it up using about 25W tapered soldering tip, then add new 70% Tin and de-solder using Cupper braid, then re-solder using clean 70% Tin.

06- Sometime, you need to re-solder not only C1,C2and C3 but you should fix the entire SMD "Surface Mounted Devices" on the PCB "Printed Circuit Borad" C4, R1 to 5 which are located near the 10 Pin Male Connector.

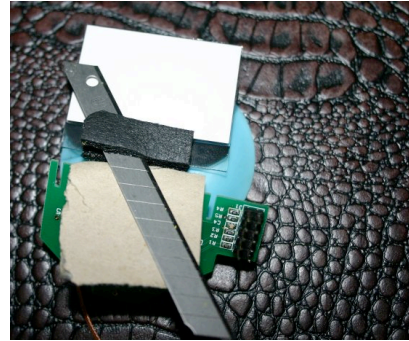
Now, connect the LCD to the main NXT board, without putting the white plastic base. And try to restart the unit by putting the rubber switches in place, and putting the batteries. If you still have trouble, try to press the black flat wire on the LCD using a little pressure on the back side of the LCD. Or the upper side of the PCB. If it worked then you have a "Flat wire issue". And here you can use "self-adhesive Foam tape". We are using the same material to isolate water pipelines, or to isolate room windows.



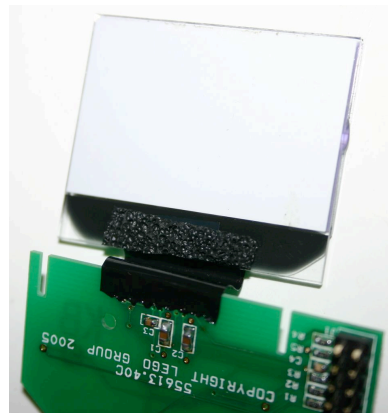
07- Adjust the foam thickness to give the adequate pressure on the flat by the use of sharp blade.

Be careful not to touch your hand in the cutting edge of this plate, and it's not suitable for newbie to do that.

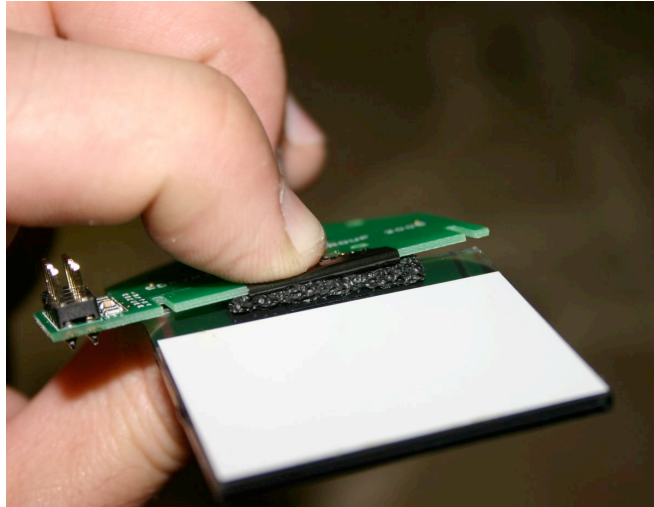
Also, protect the Flat against the blade.



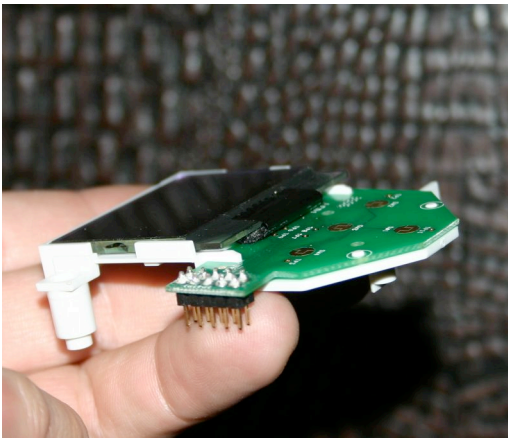
08- Adjusted foam in place.



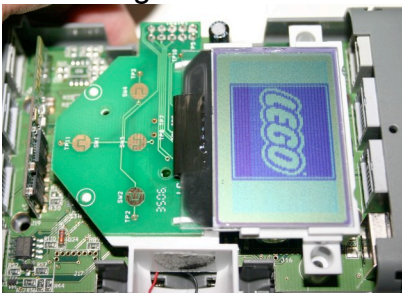
09- Testing the foam thickness.



10- Assembled LCD Block



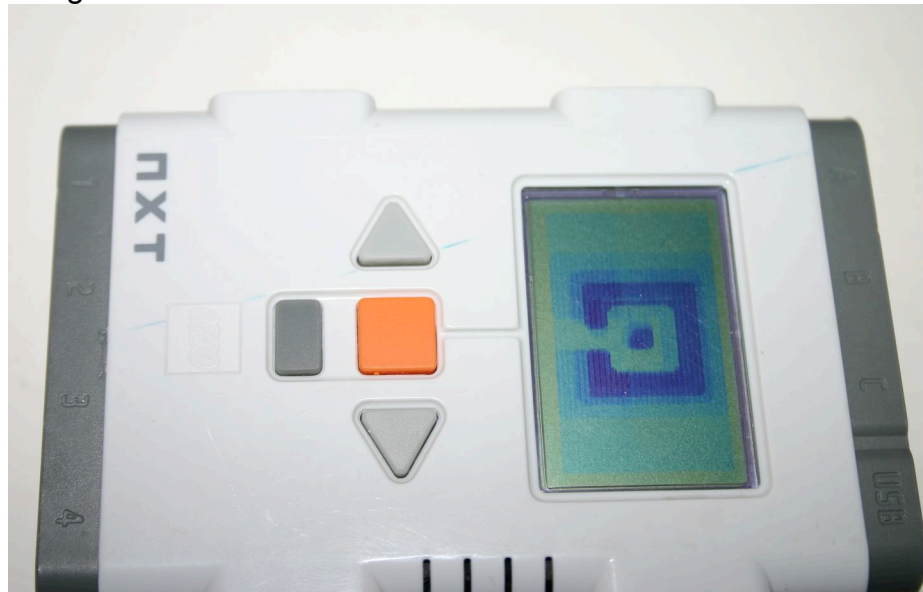
11- testing



12- Putting the Rubber Switches in Place.



13- Congratulations



You can add my entire contact information for further help in my country

Soubhi Sabbagh
D.D.S
Damascus – SYRIA
Email: drsoubhi@gmail.com
GSM 00963944416832